

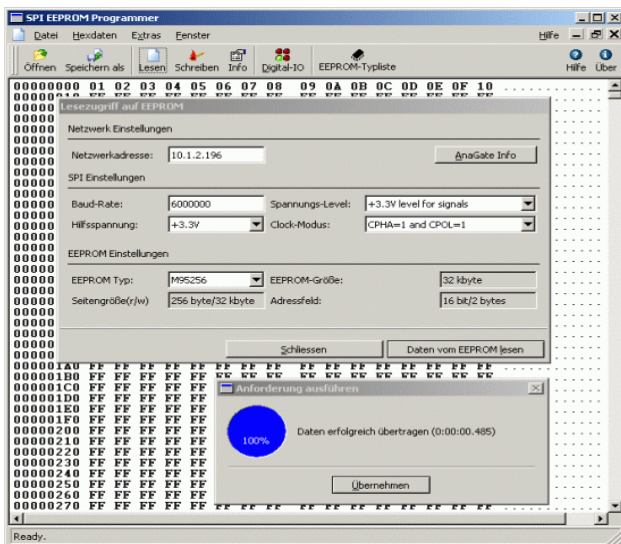


SPI EEPROM Programmer SPI EEPROM/Flash Programmer

Product overview

The SPI EEPROM Programmer is a professional utility designed for programming serial SPI EEPROMs and flash memories easily and quickly.

The SPI EEPROM Programmer uses an AnaGate SPI for communication with the SPI bus, an additional device driver software for personal computer is not necessary. As many as desired programming devices can be operated at the same time by a single PC.



The programmer device is designed for development and serial production. It is

particularly suitable for programming serial EEPROMs via the SPI bus, whereby the EEPROM can be addressed either on the finished application board or as an independent device.

Programmer features

- Automatically checks the programmed data (verification)
- SPI baud rate: 10 to 6250 kbps
- Supported hex data formats: raw binary, Intel Hex ASCII and Motorola S-records
- Supported operating systems: Windows 7/XP/2003 (Linux version upon request)
- Provides 2.7V/3.3V or 5V for supply of device or circuit board (max. 100mA)
- The programming functionality can be easily integrated in individual applications via a supplied DLL or via batch processing calls.
- EEPROM/flash types: M25P05, M25P16, M25P20, M25P80, M95128, M95256, AT25F512A, AT25F2048, AT25F4096, AT25040A, AT25080A and AT45DB041D

Not supported devices are added upon your request.

Programming speed

The following speeds were achieved at a baud rate of 6 Mhz when programming various EEPROM/flash types, followed by verification of the programmed data.

Device type	Size	Page size	Programming	Verification	Total
AT25F512	64 KByte	128 Byte	13,40 sec	1,40 sec	14,80 sec
M25P05	64 KByte	256 Byte	6,90 sec	1,30 sec	8,20 sec
M25P20	256 KByte	256 Byte	25,00 sec	5,30 sec	30,30 sec

A conventional personal computer (Intel Pentium IV, 2.8 GHz, 512 MB RAM running Windows 2000) was used for taking the readings.



Technical specifications

Measurements:	L x W x H	155 mm x 105 mm x 40 mm
	Weight	ca. 250 g
Power supply	Input voltage	9 ..28 V DC or via power supply (EU, UK, US)
SPI Bus:	Baud rate	10 to 6250 kbps, software configuration
	High-Level CLK/MISO/MOSI/-SS	2,5V/3,3V/5,0V, software configuration
	Interface	1x DB9 plug with CLK, MISO, MOSI, -SS and 5V
LAN Interface:	Baud rate	10/100 Mbps
	TCP/IP	Static or dynamic (DHCP) IP address
	Interface	RJ45 socket
Digital IO:	Inputs	4, galvanic decoupled
	Outputs	4, galvanic decoupled (max. 5mA)
Software:	The programming of SPI devices bus can done also using standard programming languages (e.g. VB, C/C++, Delphi) with a DLL supplied with the device. Configuration via web interface. SPI EEPROM Programmer for Windows 2000/XP/2003. Linux support is available upon request.	

Ordering information

Order number	Scope of delivery
PR-SPI-HW-XX	SPI EEPROM Programmer for Windows 7/XP/2003 including AnaGate SPI CD-Rom with manual, Software-API as a DLL for Windows 7/XP/2003, XX = EU: plug-in power supply for Europe (230V/50Hz) XX = US: plug-in power supply for USA (110V/60Hz) XX = UK: plug-in power supply for United Kingdom (230V/50Hz) XX = WO: no power supply, incl. 2-pin connector cable for 8-28V DC
GT-SPI-AH	Adapter for mounting on DIN rails